

FIRE PREVENTION

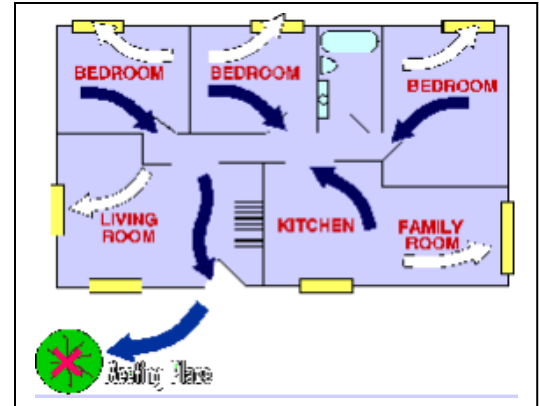
Smoke detectors are the first indicator of a fire. The most efficient evacuation plan becomes inconsequential if smoke detectors are not properly maintained. Detectors should be checked monthly, and batteries replaced bi-annually.

Detectors should be placed on ceilings in every room throughout the dwelling.

Smoke detectors should be replaced as recommended by the manufacturer. Smoke detectors should be clearly labeled by a reputable testing laboratory.

Immediately upon the smoke detector sounding, evacuate the home. Never re-enter a burning building, even if someone remains trapped inside.

EVACUATION PLAN



Devising an evacuation plan is essential to surviving a house fire. Draw a floor plan of the house, labeling all exit avenues that can be used to evacuate.

Choose two escape routes, in the event one of the routes is blocked by smoke or fire. The first route should be the most easily accessible escape route from all rooms in the house. Escape routes should always be free of clutter.

If both escape routes are blocked, a room should be designated as a safety room where everyone can convene to wait for rescue. Choose a room with a phone line and a window. The room should be stocked with multiple blankets to prevent smoke and heat from coming under the door, and to cushion a heavy object if it must be thrown at a window to break the window open for air.

Designate a meeting place outside for family members to congregate to be sure everyone is safely outside. If someone is missing, do not re-enter the house. Fire personnel are trained in rescue attempts and have appropriate safety gear to enter a fire. Re-entering a burning building creates multiple victims and can inhibit rescue attempts.

Enact monthly fire drills to be sure everyone is familiar with the evacuation plan. Hold drills during the night to be sure young children and older residents will be awakened by the alarm in the event of a real fire.

An adult should assist residents requiring assistance evacuating.

Make sure windows open properly.

A copy of the floor plan, and additional information required for fire safety, should be displayed on the refrigerator. Children should be familiar with "stop, drop, and roll," know to touch a door for heat before opening, and that they are able to open windows in their bedrooms.

Do not jump out of a window unless on the ground or on the first floor. Secure the room, open the window, and draw attention to yourself so that rescuers can easily spot you.